

CONTENTS

Sheets n°	Title	Specificities
1	Reset and back to the factory parameters	
2	The ship control application doesn't light on the display	Web Server
3	Enter bloc 7 into the network	Bloc 7
4	Enter the lighting bloc into the network	Lighting block
5	Enter bloc 9 into the network	Bloc 9
6	Navigation light, mooring light or deck light are not fonctionning	Bloc 9
7	The lighting is not fonctionning	Lighting block
8	The air conditionning is not fonctionning	Air conditionning PCB card and cabin control panel
9	No navigation data comes up	Web Server
10	No batteries data comes up	Genset
11	No batteries data comes up	Master chargeur
12	No batteries data comes up	Bloc 7/IBS
13	No battery intensity comes up	Bloc 7/IBS
14	No gauge water level comes up	Bloc 7
15	The genset doesn't switch on	Selector
16	The genset doesn't switch off	Selector
17	The feed selector is not fonctionning	Selector
18	The bilge pumps are not fonctionning	Bloc 9
19	The mono-zone stereo is not fonctionning	Amplifier and mono-zone control panel
20	The mutizone stereo is not fuctionning	Amplifier and multizone control panel
21	The engine data don't light up on the display	Wifi server
22	The switching is not fonctionning	Bloc 9
23	Microswitch set up	
24	Frequent problems	

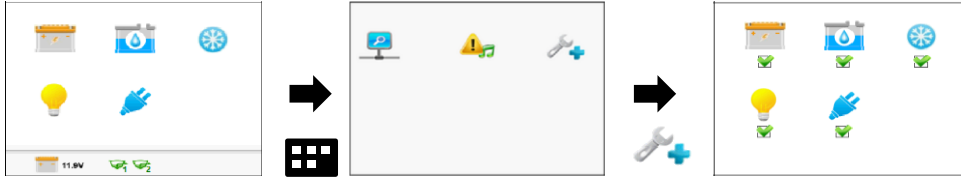
Yes ↓

How to proceed a reset

No ↓

Reset : Switch the battery breakers on off position. Plug the boat on shore. Wait for 1min.
Switch the battery breakers on ON position. Check that there is 230v at the switch board

Select the option available on the boat



How to come back to the factory parameters

Check at the Navicolor display that all the blocs of the boat are available on the screen. Warning ! The air conditioning PCB cards will appear on the Navicolor display only if they are powered (breakers of the fan coils)

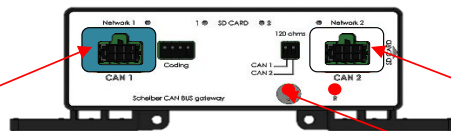
Unplug both the navicolor and the web server from the network

Enter the factory parameters. For that :

With the Hub CAN CAN :

Press a while (+10s) on the button "s" to send the factory configuration.

Confort (Stereo, AC)

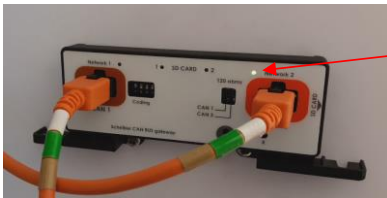


Backbone (Main network)

Button « S »

The hub is not blinking the same way. Once the normal blinking has come back, switch the battery breakers off as well as the air conditioning fan coils and switch them back on.
Warning !! Never shut down the power during the programmation

Normal blink :



Numbers of blink =
numbers of modules on the
main network

Numbers of blink=
Numbers of modules on
the secondary network



Blink set up mode :



Les 2 LED's blink



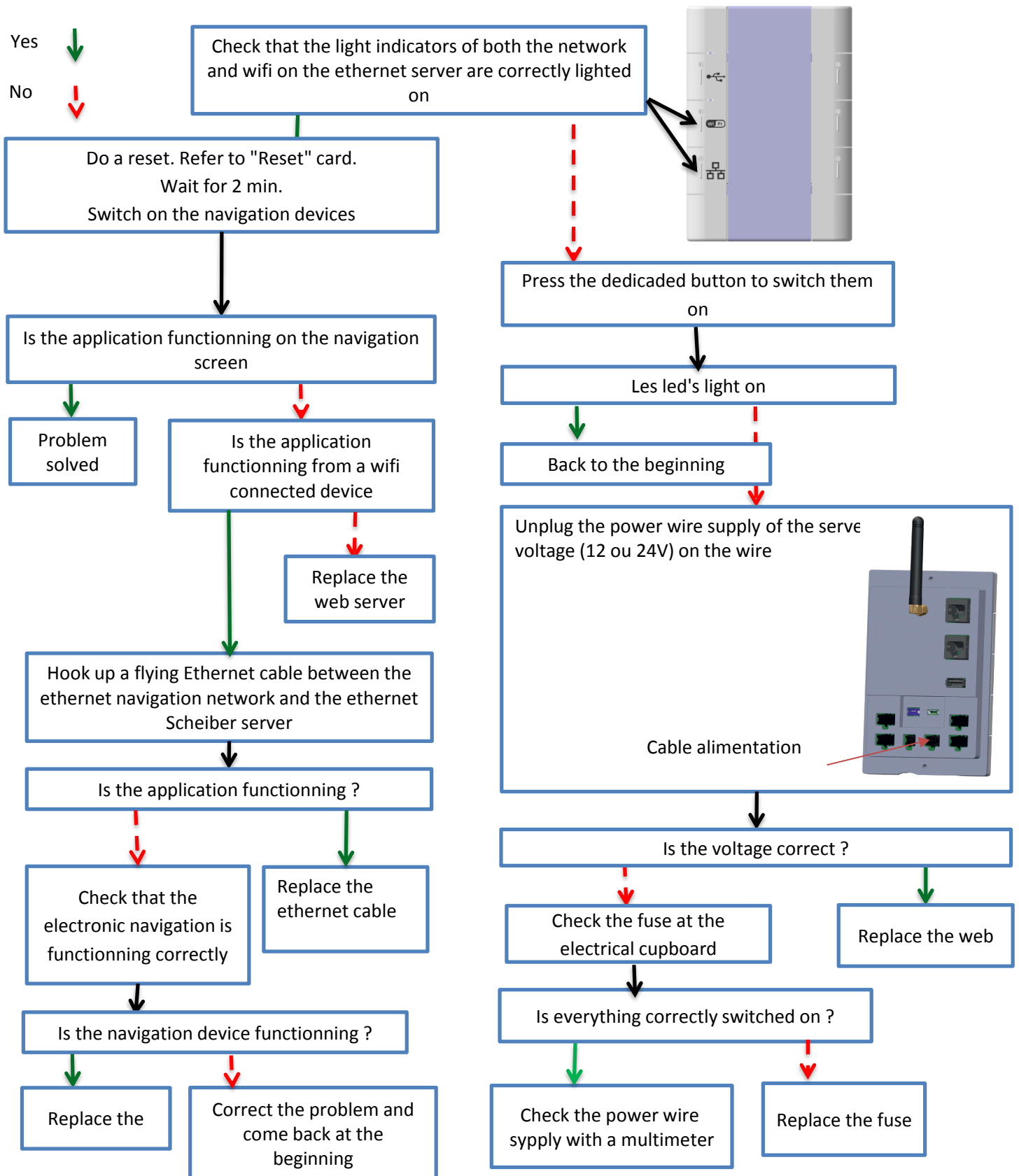
Les 4 LED's blink



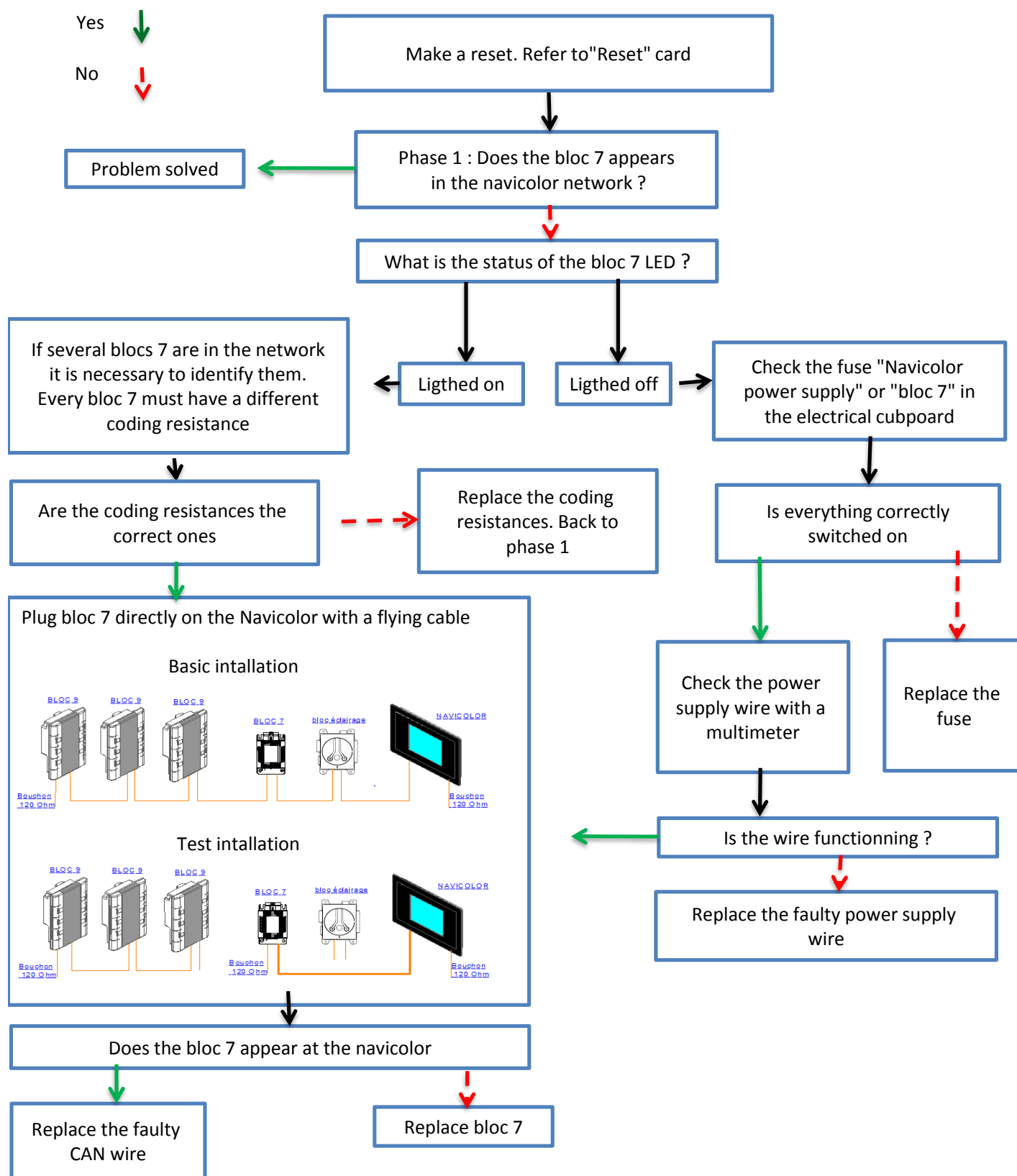
Les 2 LED's blink

Switch the battery breakers off. Plug both the Navicolor and the web server back to the network and switch the battery breakers back on

The Ship Control application is not functioning



Power supply checking and installation of bloc 7 in the network



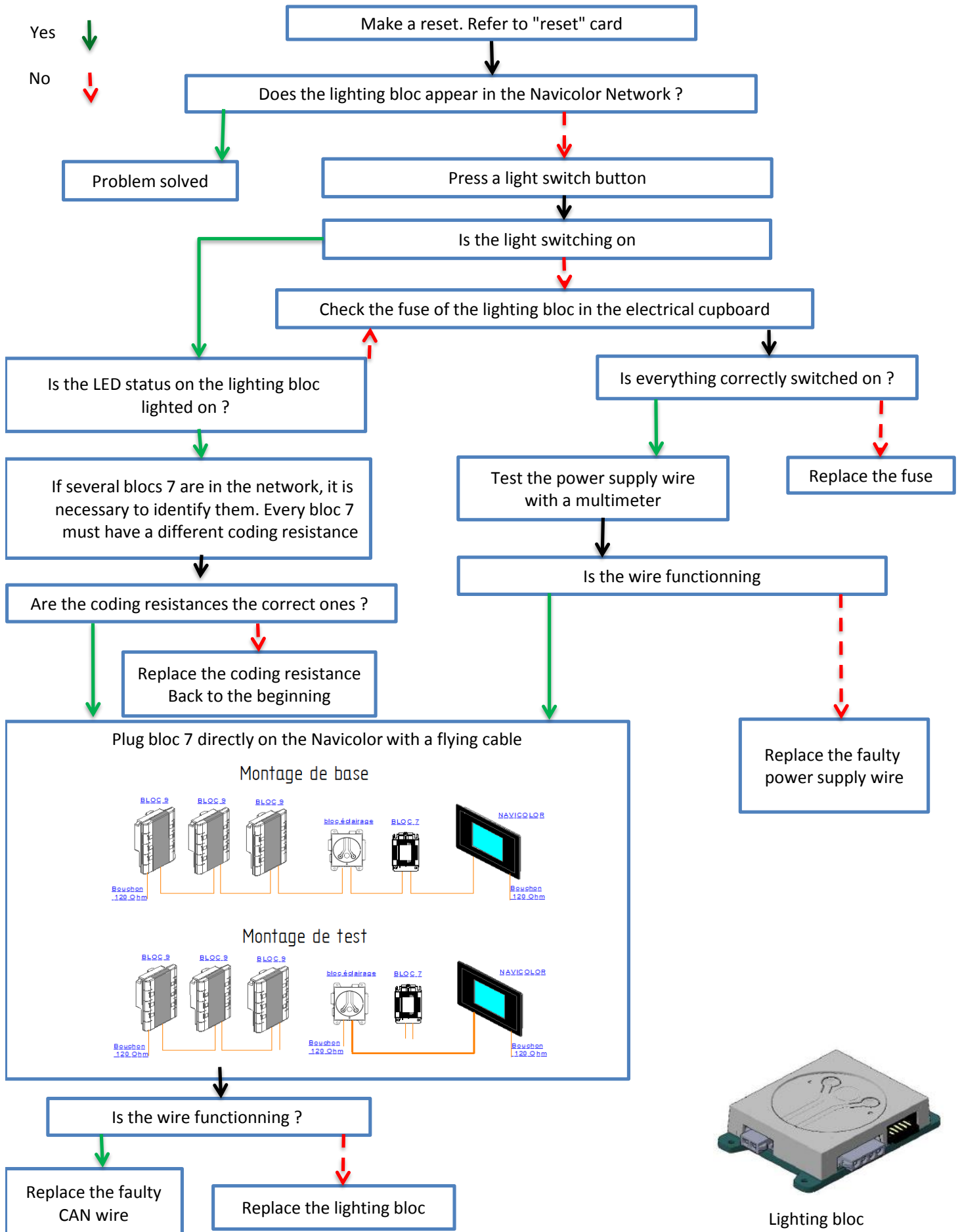
Bloc 7 côté Alim



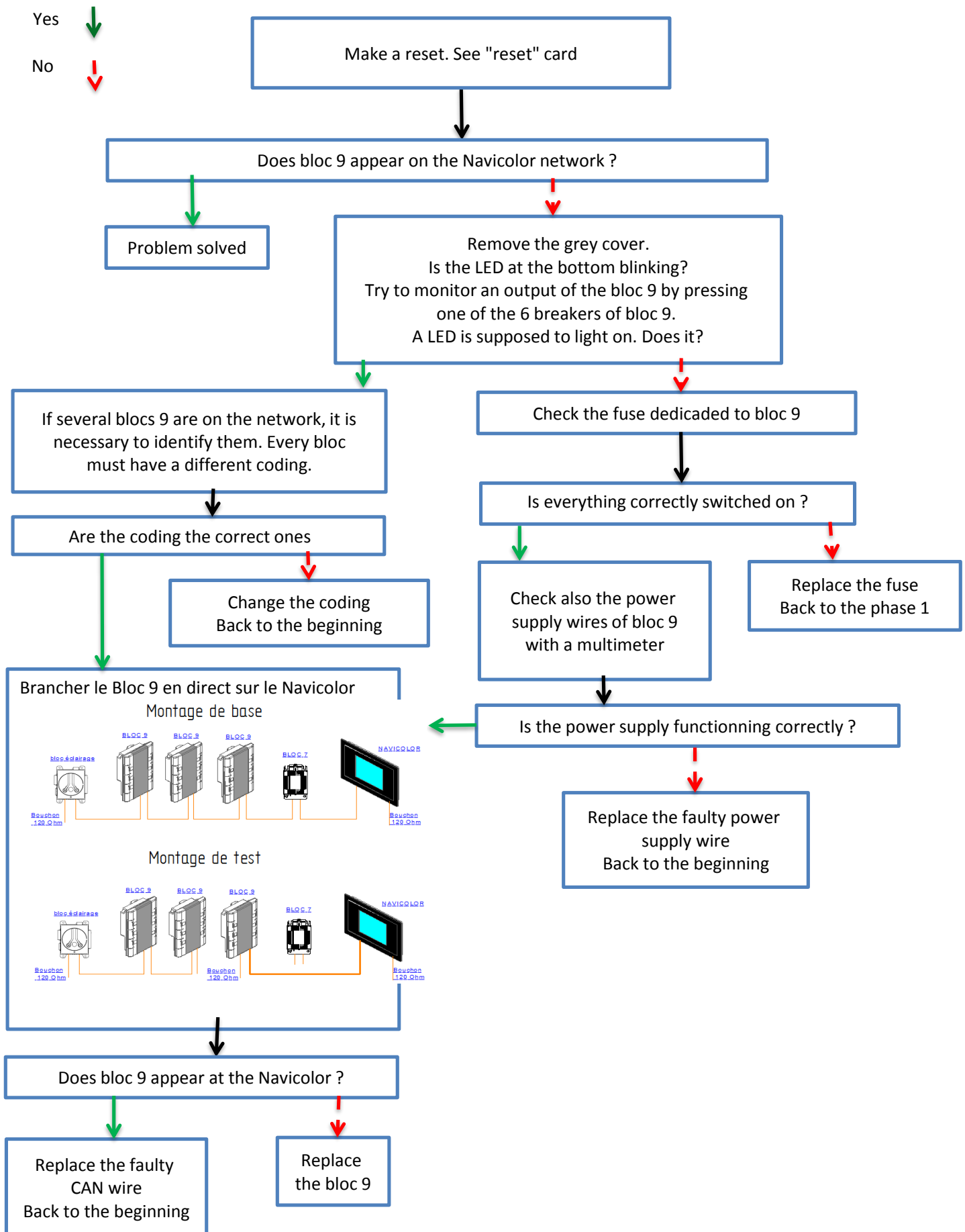
Bloc 7 côté Connection CAN



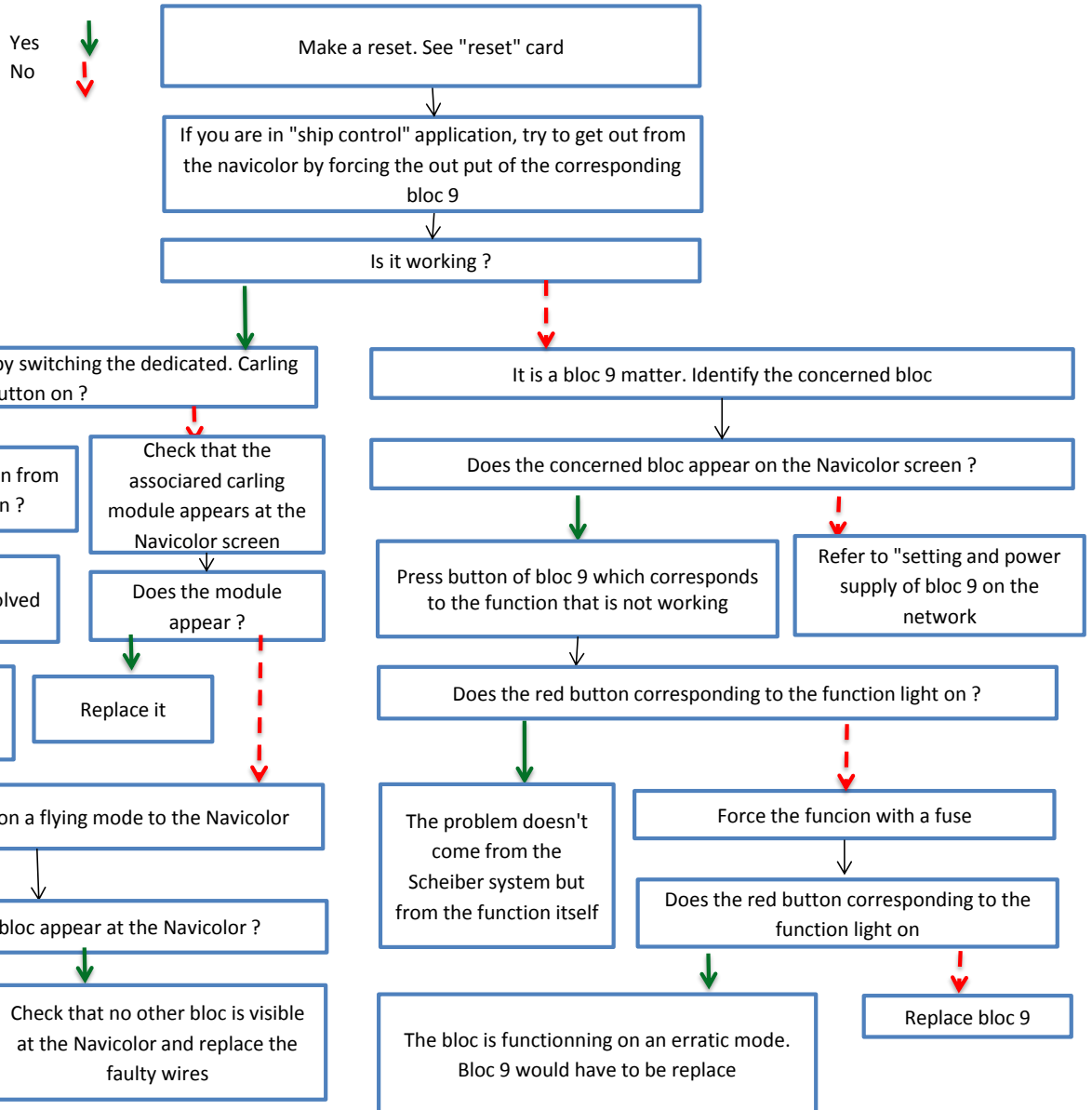
Power supply checking and installation of bloc 7 in the network

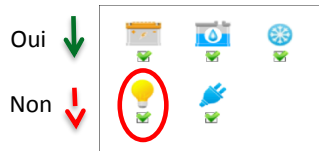


Check power supply and setting bloc 9 in the network

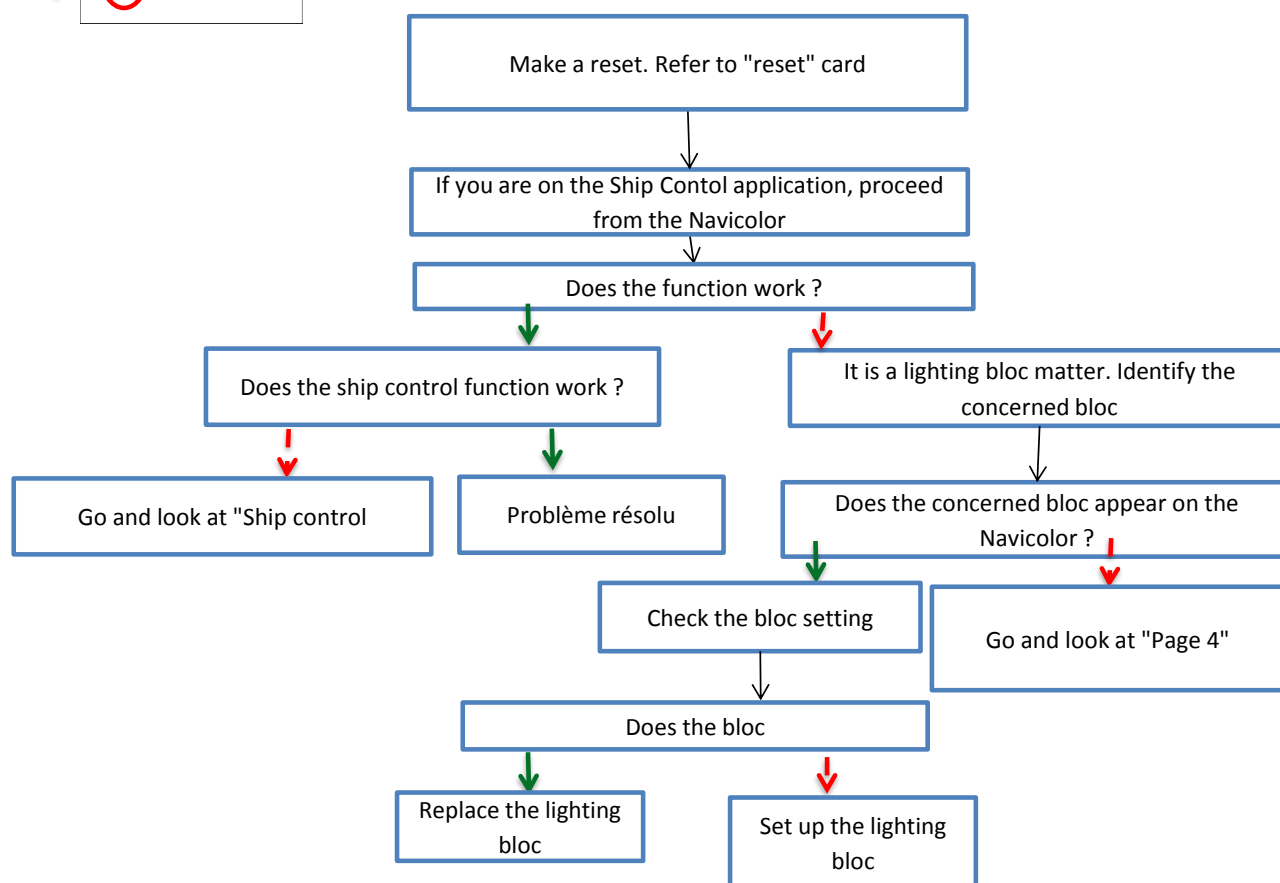


The navigation lights, night mode, under water lights or the mooring light are not functioning



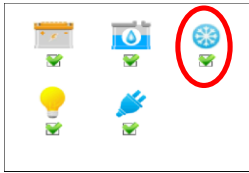


The lighting is not functioning



Yes

No



The A/C is not fonctionning

Statement : The A/C breakers are switched on , the A/C selector is working and a voltage value is showing up.

Make a rest.

Refer to "reset" card

If you are on ship control application proceed the set up from the associated control panel of the cabine

Is the function working ?

The ship control function is working

Go and look at "Ship control"

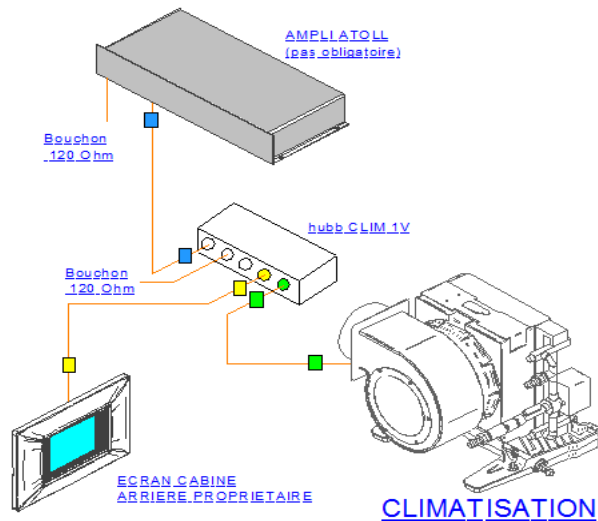
Problem solved

Ensure that the number of the cabin control panel is the same than the A/C card

Numbers are identical ?

Enter the correct number

Proceed the following installation with flying wires



Is the A/C working from the cabin control panel

Replace the faulty wire

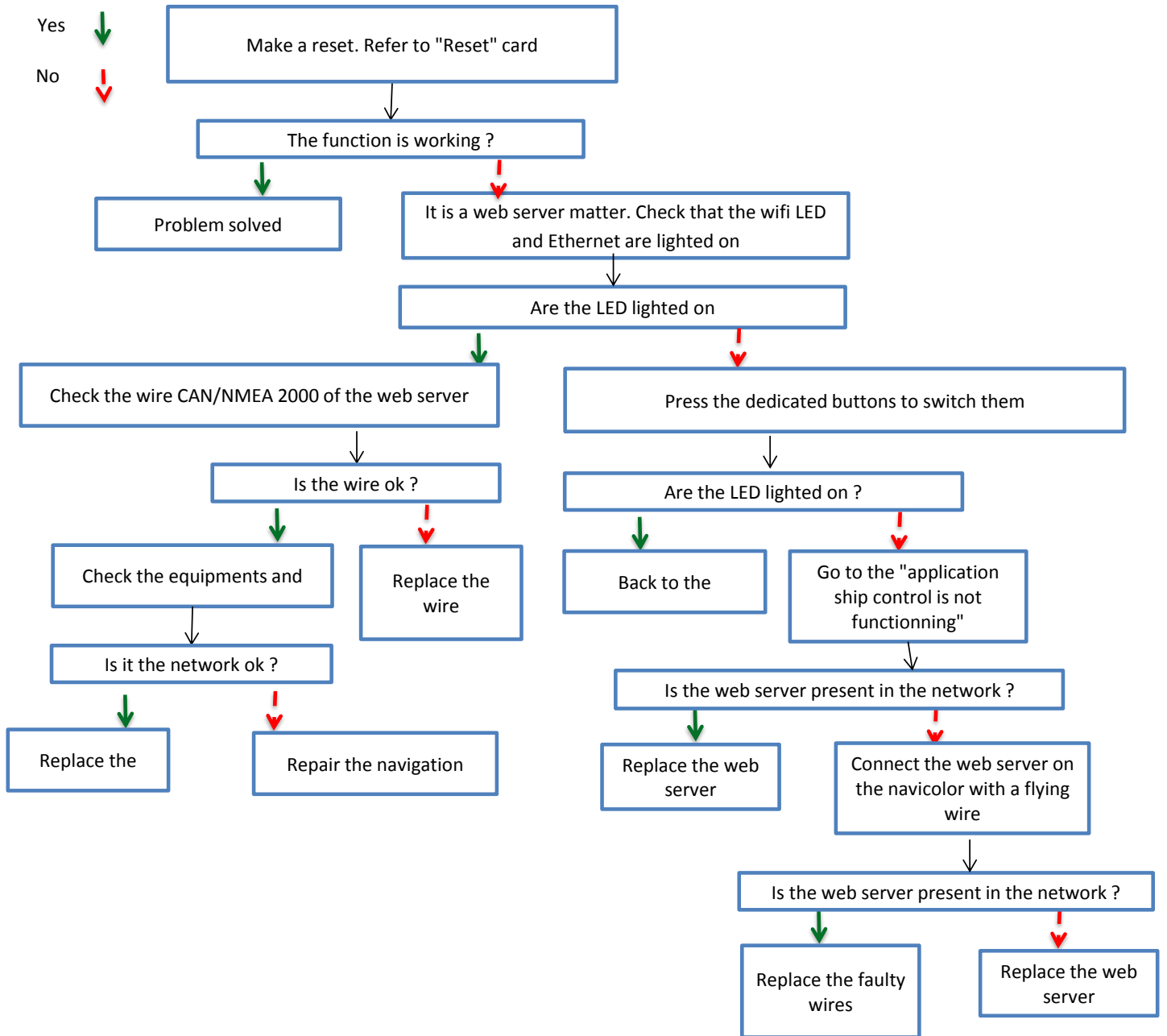
Check the A/C, compresor etc...If everything OK, replace the A/C card

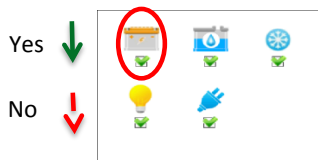
Is everything OK ?

Correct the A/C

Replace the bocs of the CAN network

Navigation information are not showing up on the screen





I don't see the batteries voltage (genset batteries)

Statement : The batteries breakers must be switched on so that the batteries can be seen at the Navicolor.
Proceed a reset. See "reset" card

If you are on Ship Control application,
proceed from Navicolor

Does the function work ?

The function is
working from the
Ship Control

Go and see "Ship control application
is not functioning"

Problem
solved

It is a source selector matter. Check that, it is
present on the Navicolor

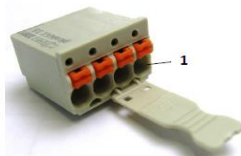
Is the source selector showing up at the Navicolor
?

Go and see "the source selector is not
functionning"

Identify the selector on which is connected the connector
"genset voltage value"

Disconnect the wire and check
the presence of voltage
between terminal 3 and 4

J8 - Option



Does the voltage value correct ?

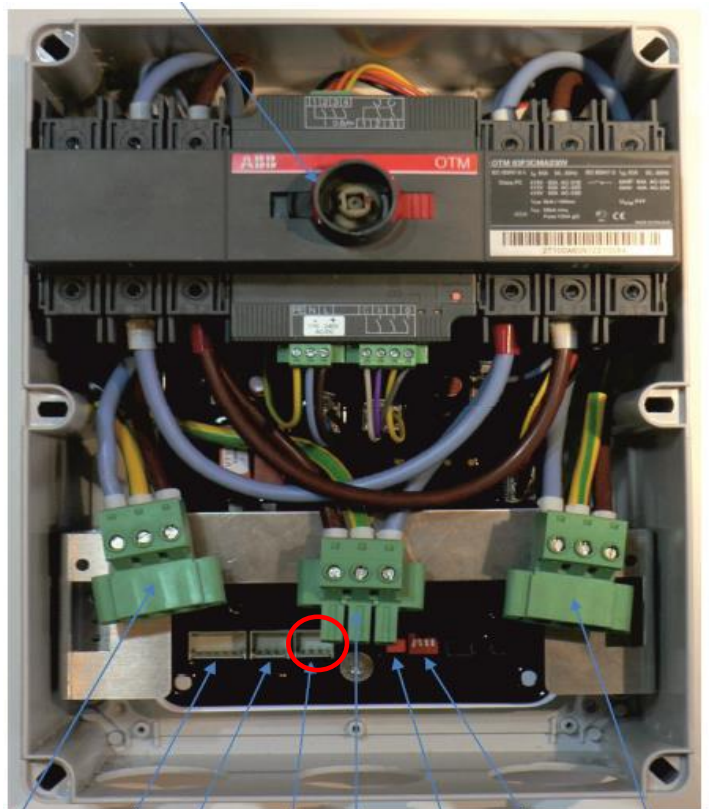
Go and see "the source
selector is not functioning"

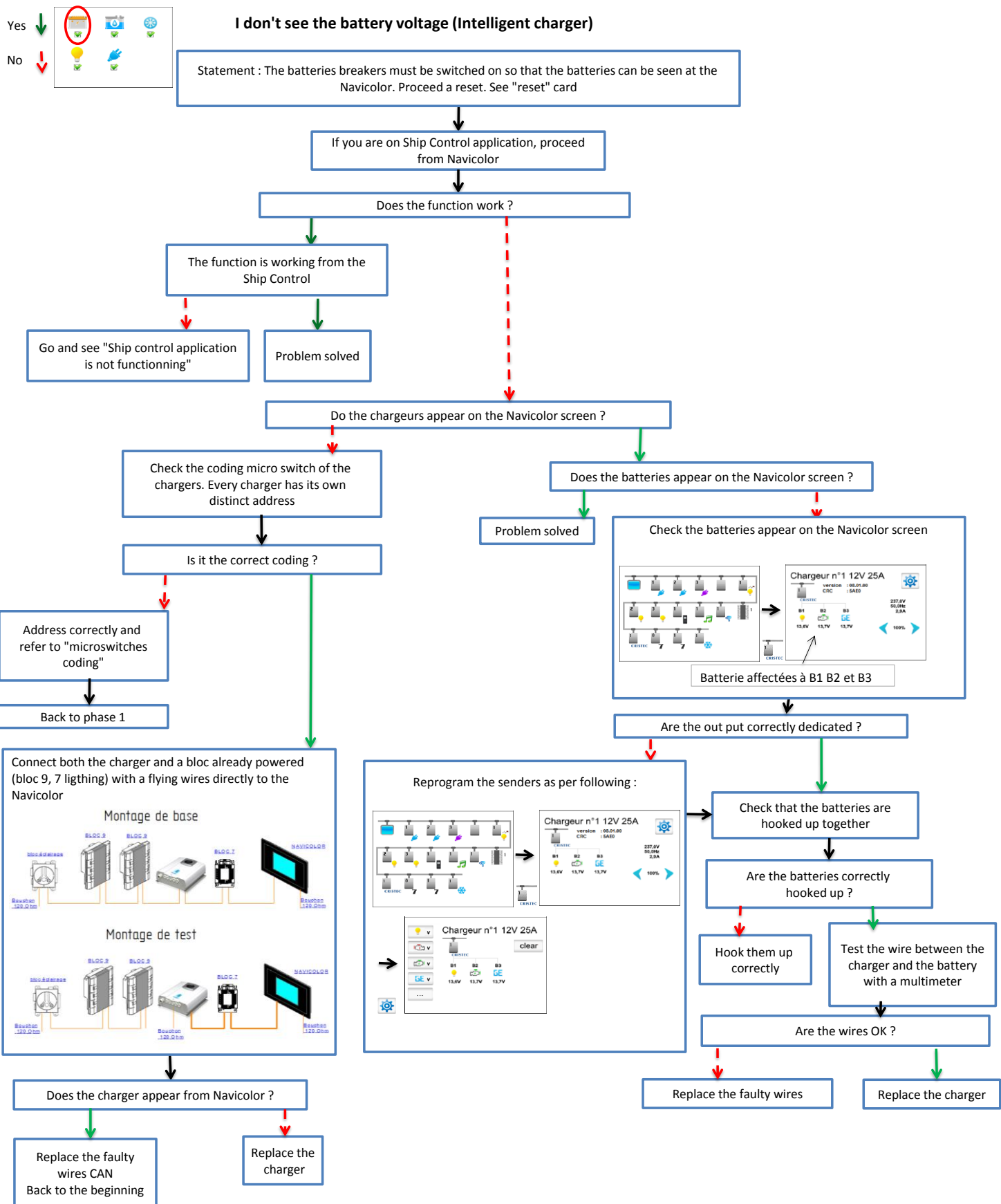
Make a test with a new flying wire

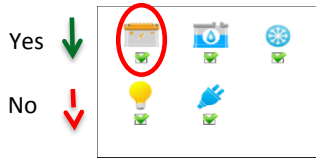
Does the function work now ?

Replace the wire

Check the battery







I don't see the battery voltage (Bloc 7) on the navicolor screen

Statement : The batteries breakers must be switched on so that the batteries can be seen at the Navicolor.
Proceed a reset. See "reset" card

If you are on Ship Control application, proceed from Navicolor

Does the function work ?

The function is working from the Ship Control

Go and see "Ship control application is not"

Problem solved

It is a bloc 7 matter. Check it is present on the Navicolor

Does bloc 7 appear on the display ?

Go and see "power supply checking and installation of bloc 7 in the network"

Check bloc 7 set up

With IBS

Without IBS

Get the measure directly on the bloc 7 : "AN01_Bloc 7_measure pseudo isolée"

Is a red LED lighting on the bloc 7 ?

Check the fuse of IBS

See card "set up an IBS sensor"

Is the fuse OK ?

Replace the fuse

Test the wire between IBS and bloc 7

Is the wire OK ?

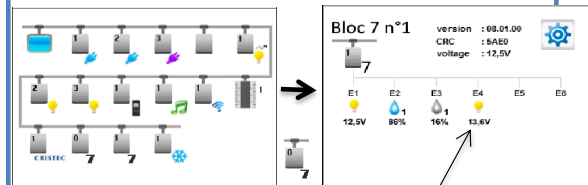
Replace the wire

Replace the IBS

Do batteries appear on the screen ?

Problem solved

Check that the batteries are correctly dedicated to bloc 7



Batterie affectées E4

Are the out put are correctly dedicated ?

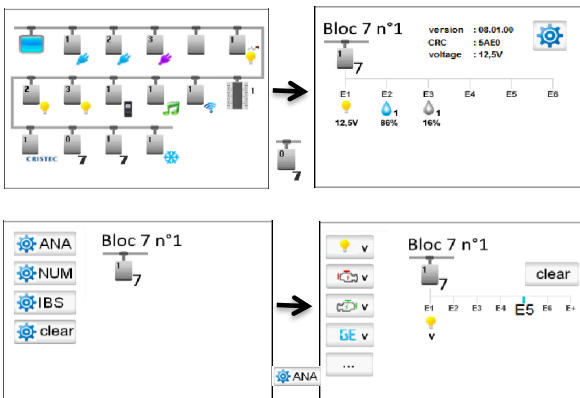
At bloc 7, check the wires which are running to the batteries

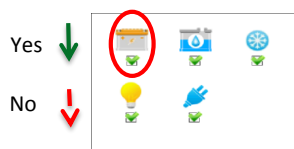
Are the wires OK ?

Replace the faulty wires

Replace bloc 7

Reprogram the senders as the follow :

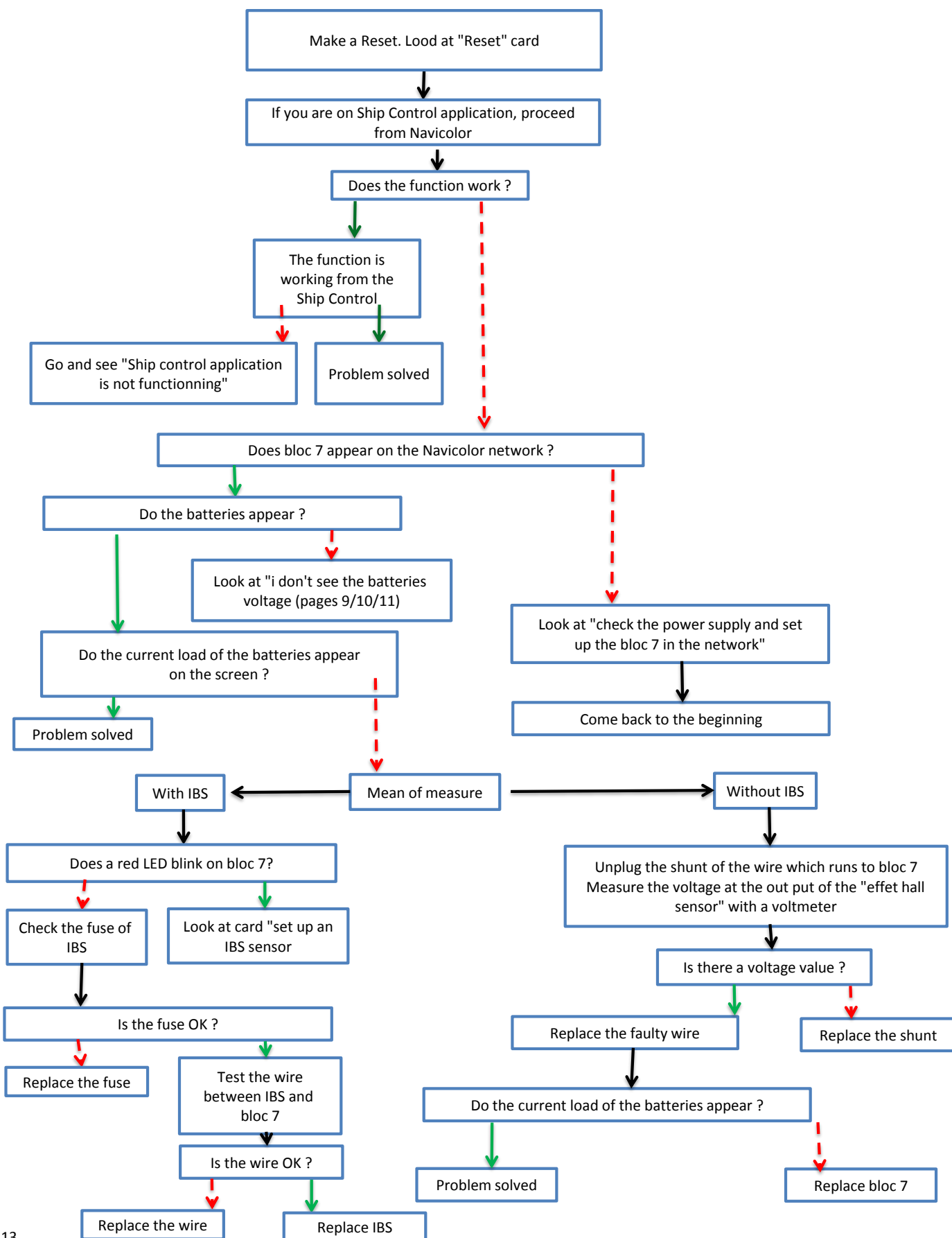




I don't see the current flow from the batteries

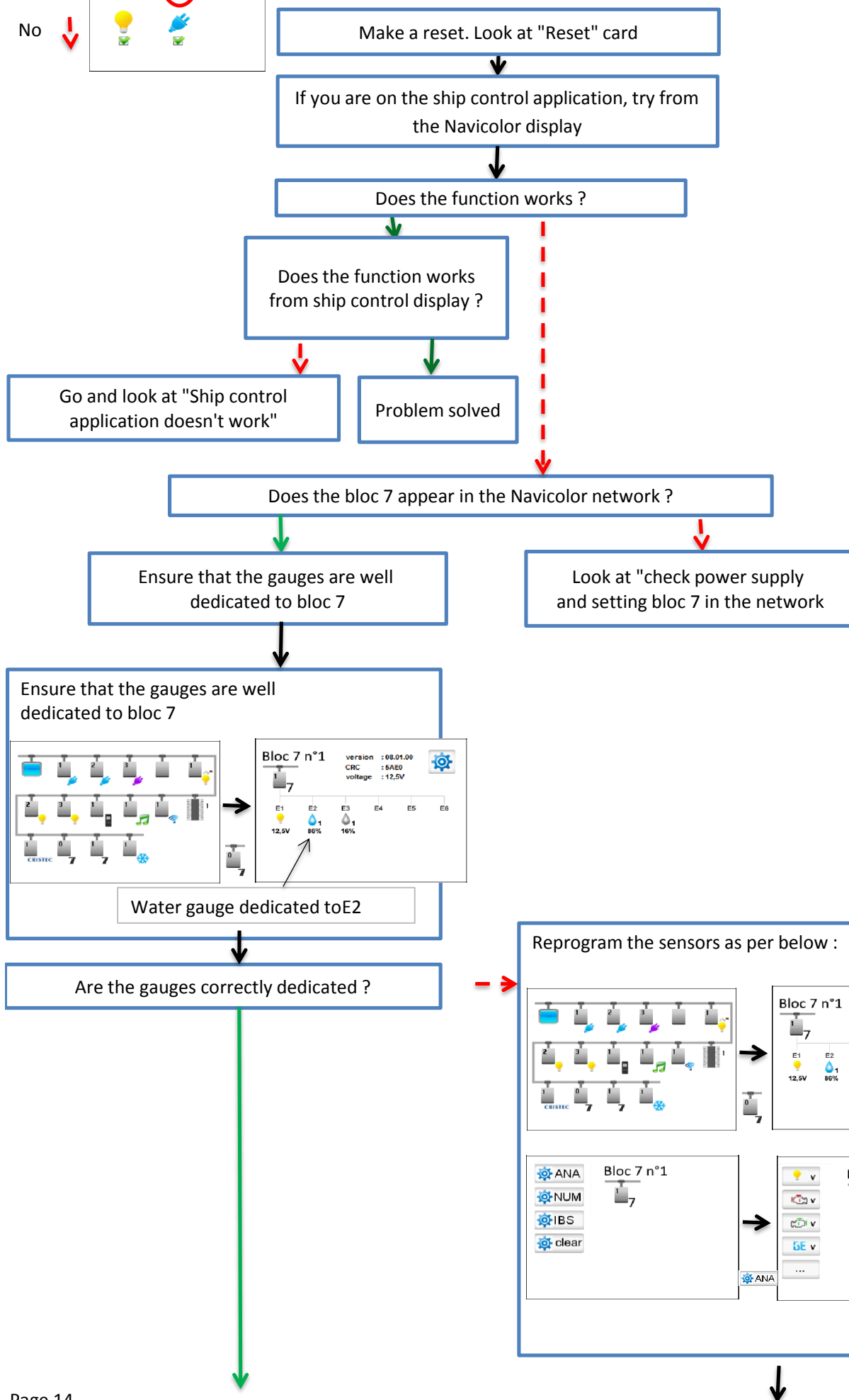
See pages 10/11/12 batteries voltage

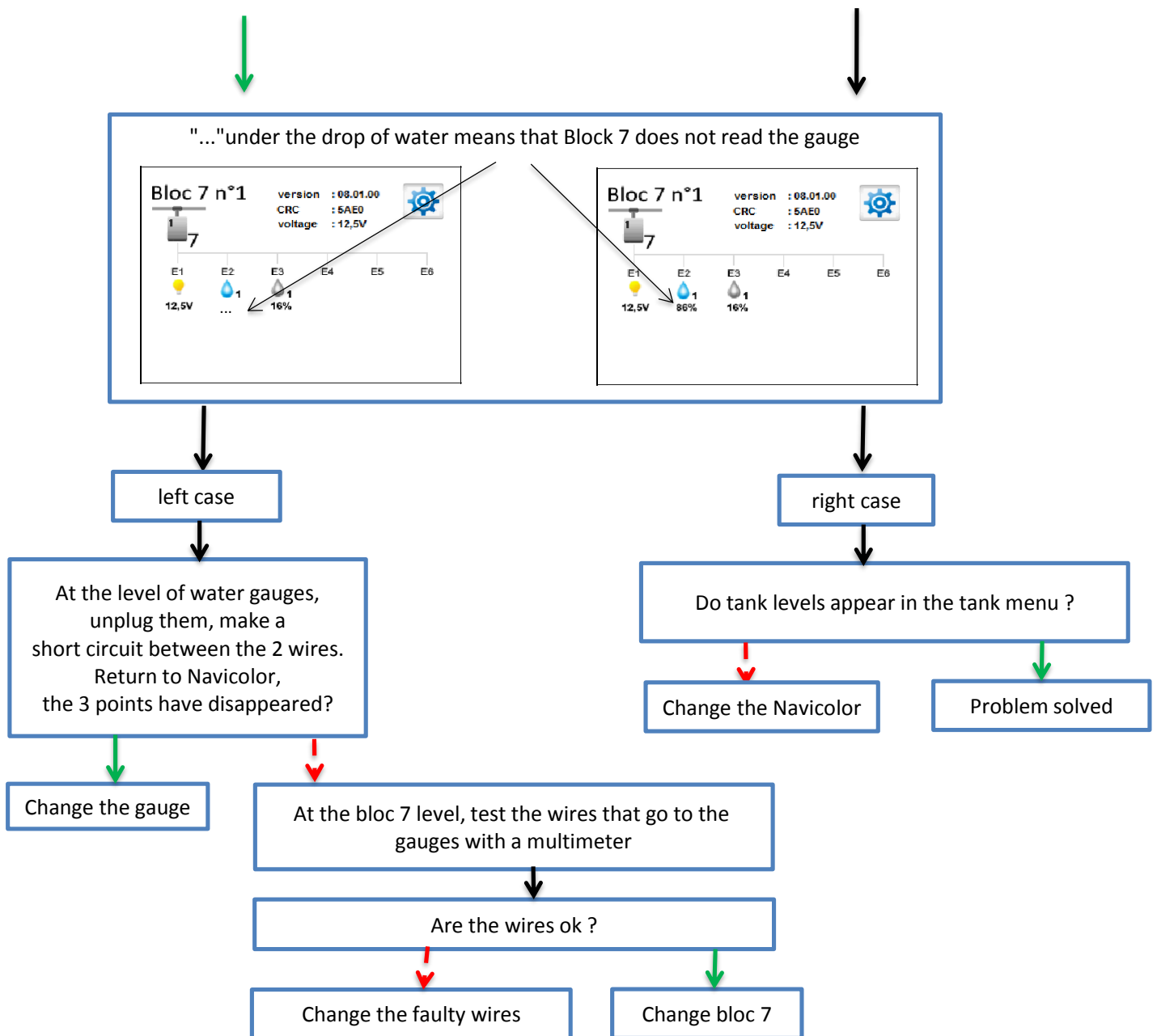
The current measurement is available only for the house batteries





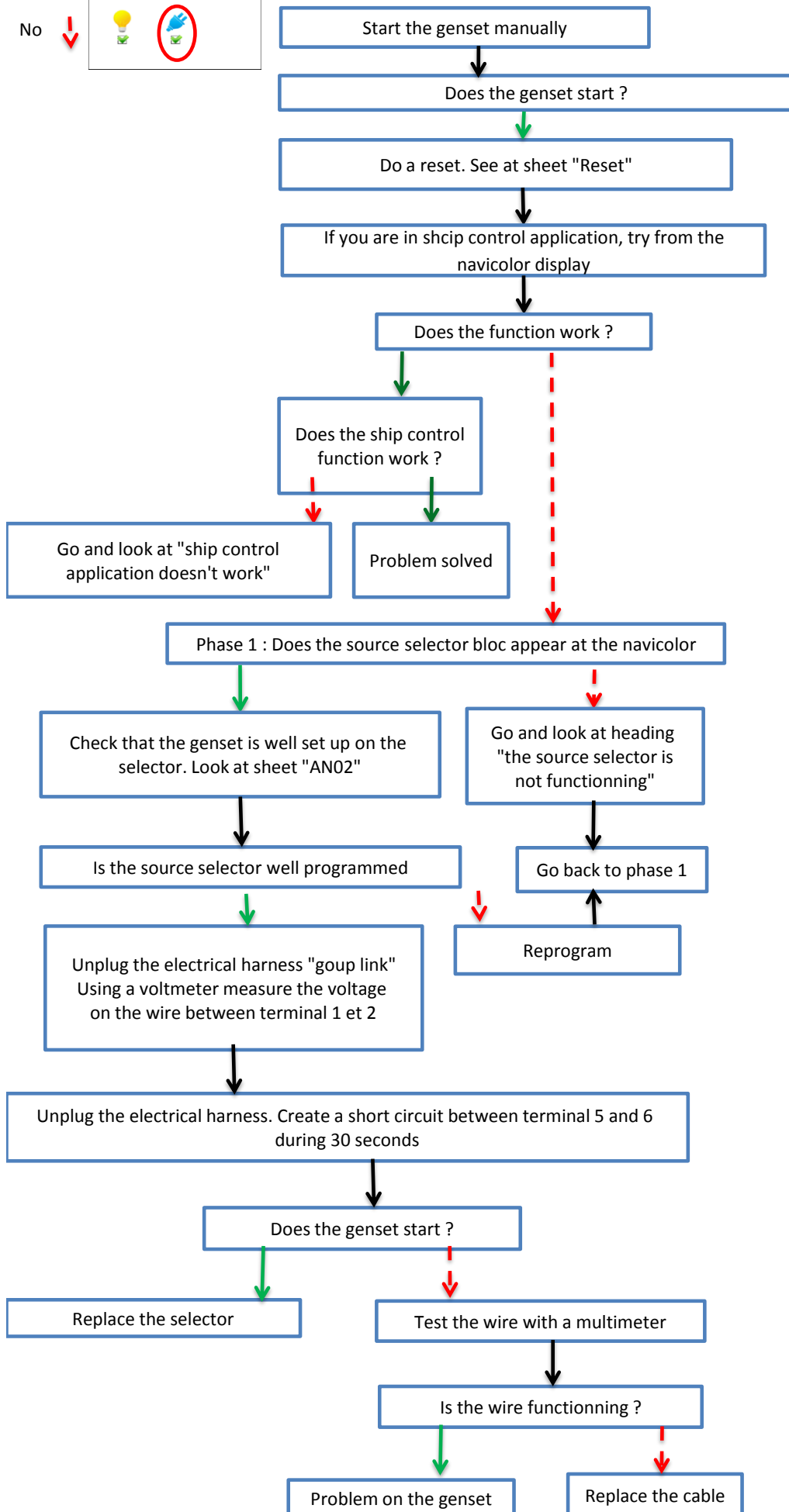
The water gauges do not appear on the screen

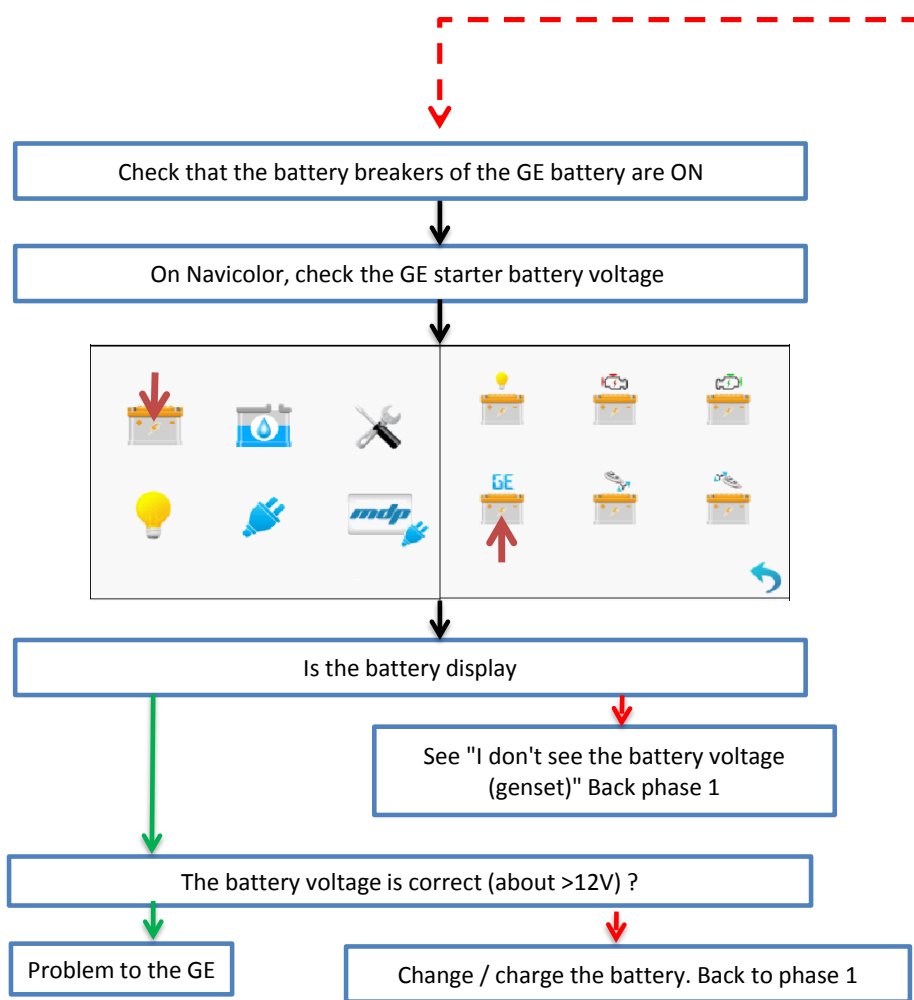






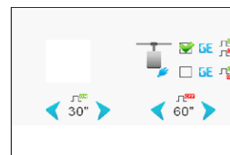
I can not start my genset





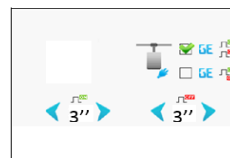
Générateur ONAN :

- 1 GE-
- 2 GE+
- 3
- 4 OFF
- 5 CO



Générateur Kohler :

- 1 GE-
- 2 GE+
- 3
- 4 OFF
- 5 CO

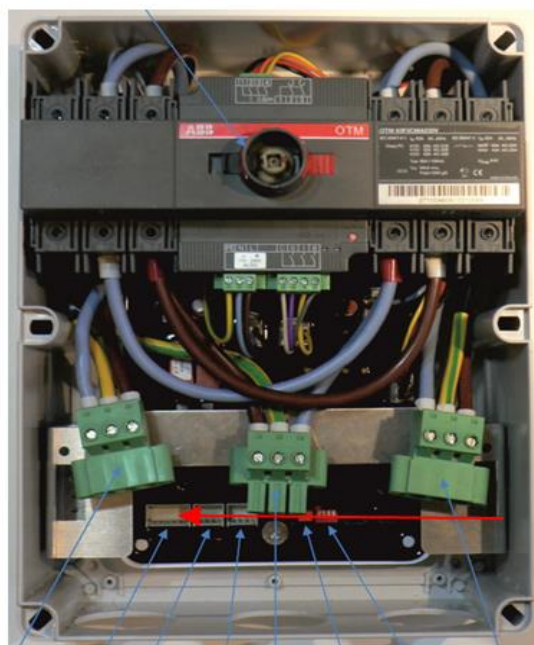
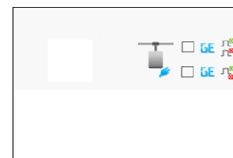


Générateur Panda

- 1 GE-
- 2 GE+
- 3
- 4
- 5 CO

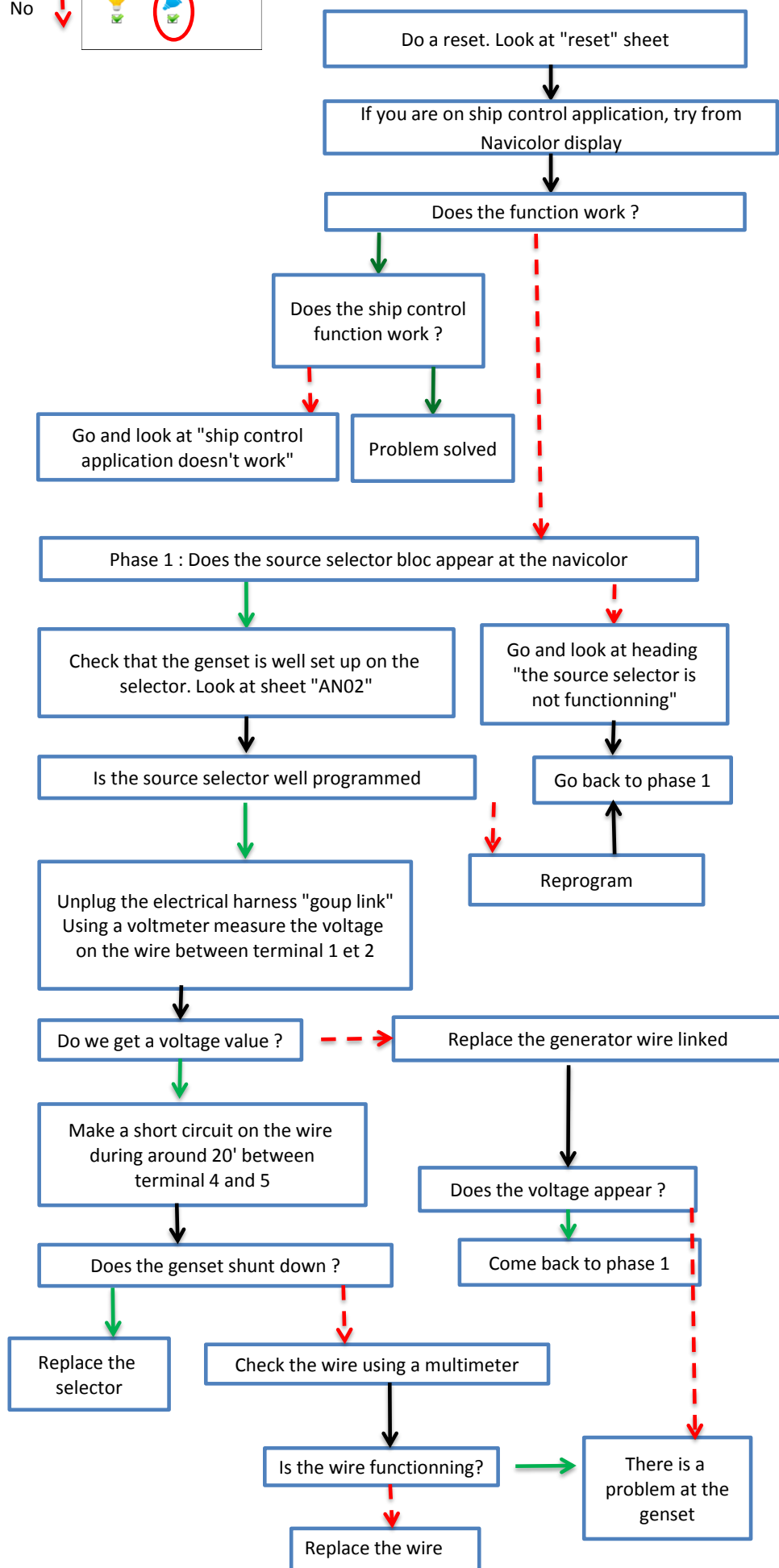


GE sans démarrage à distance.



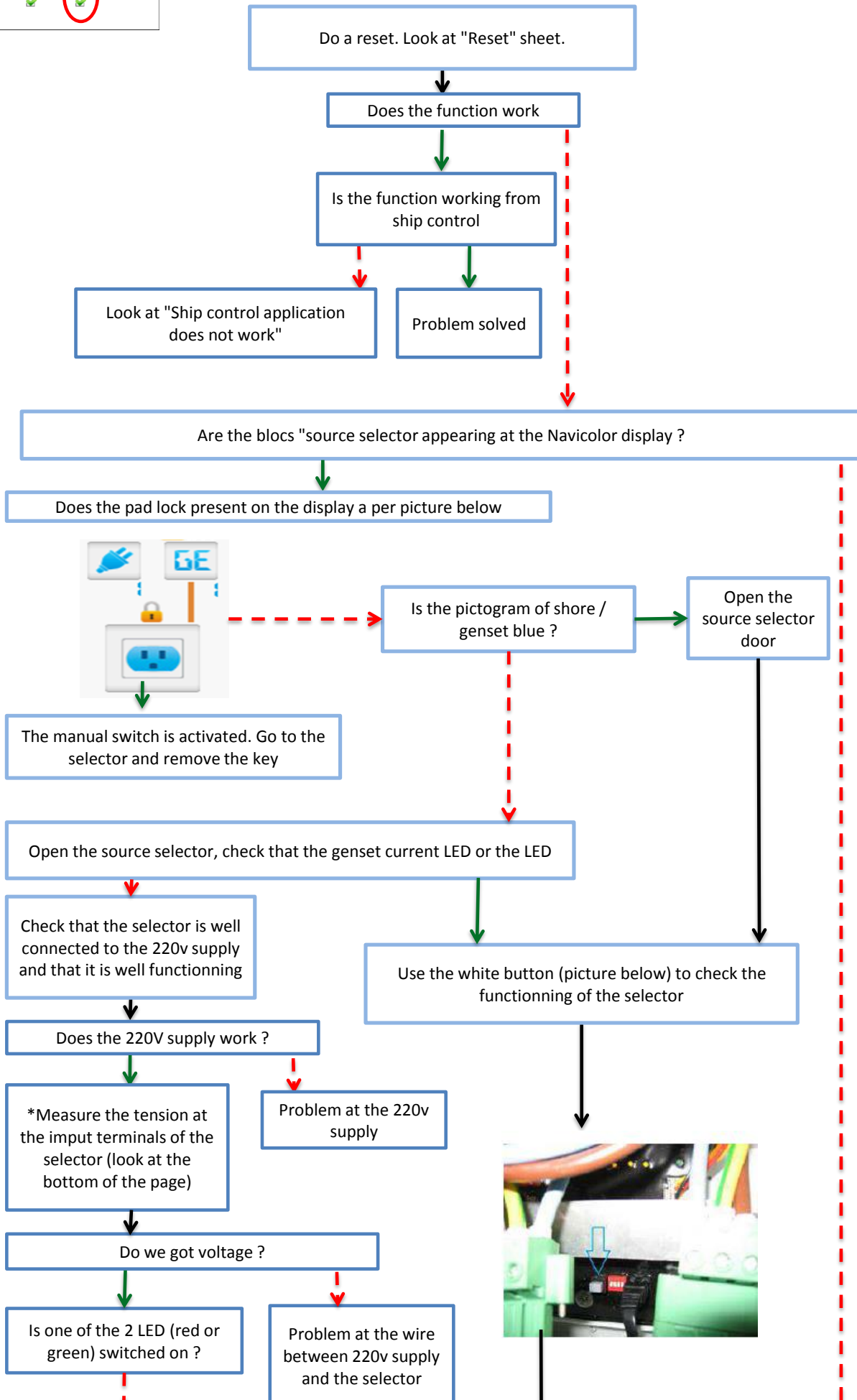


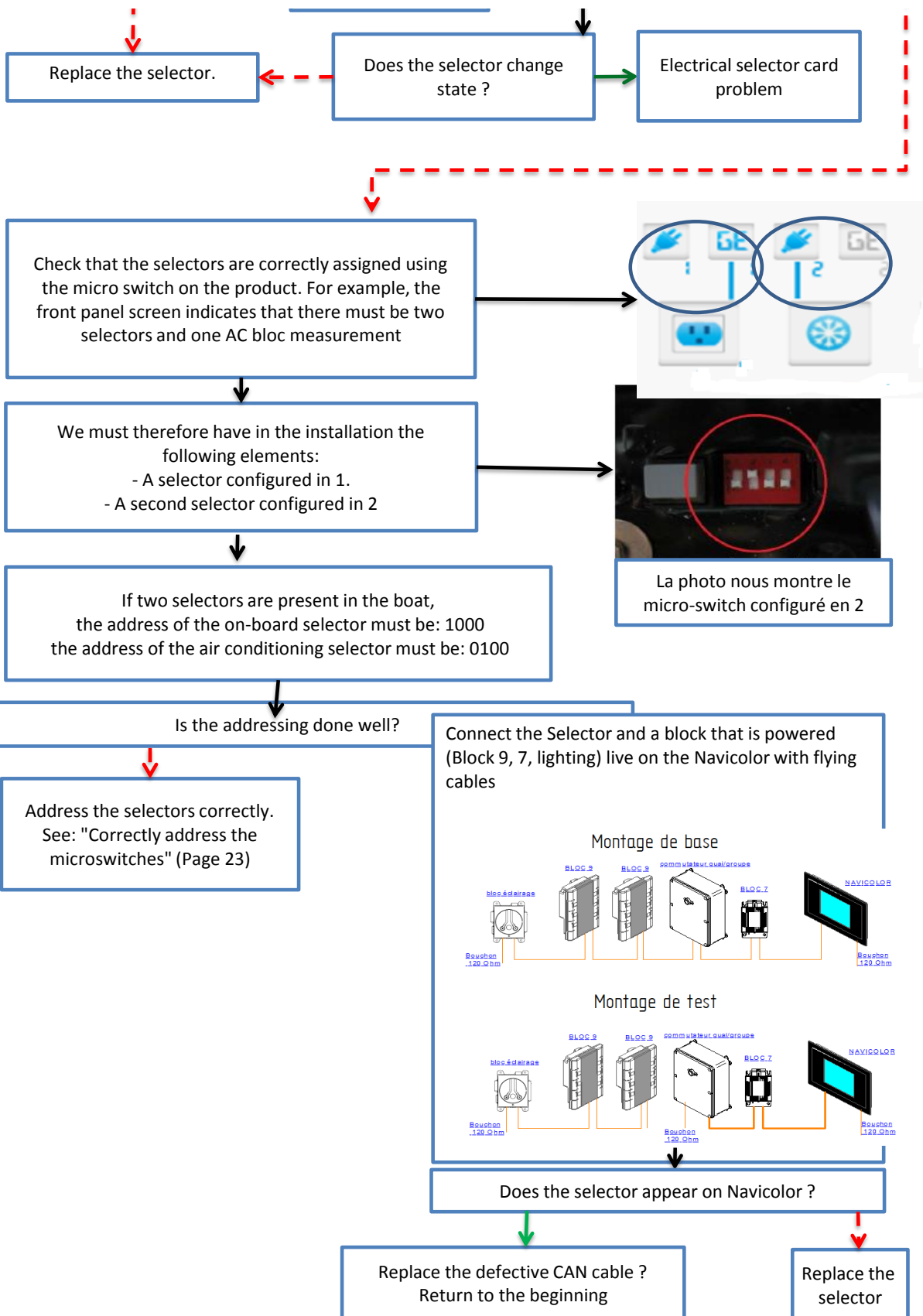
I can not shut down my genset





The selector does not work





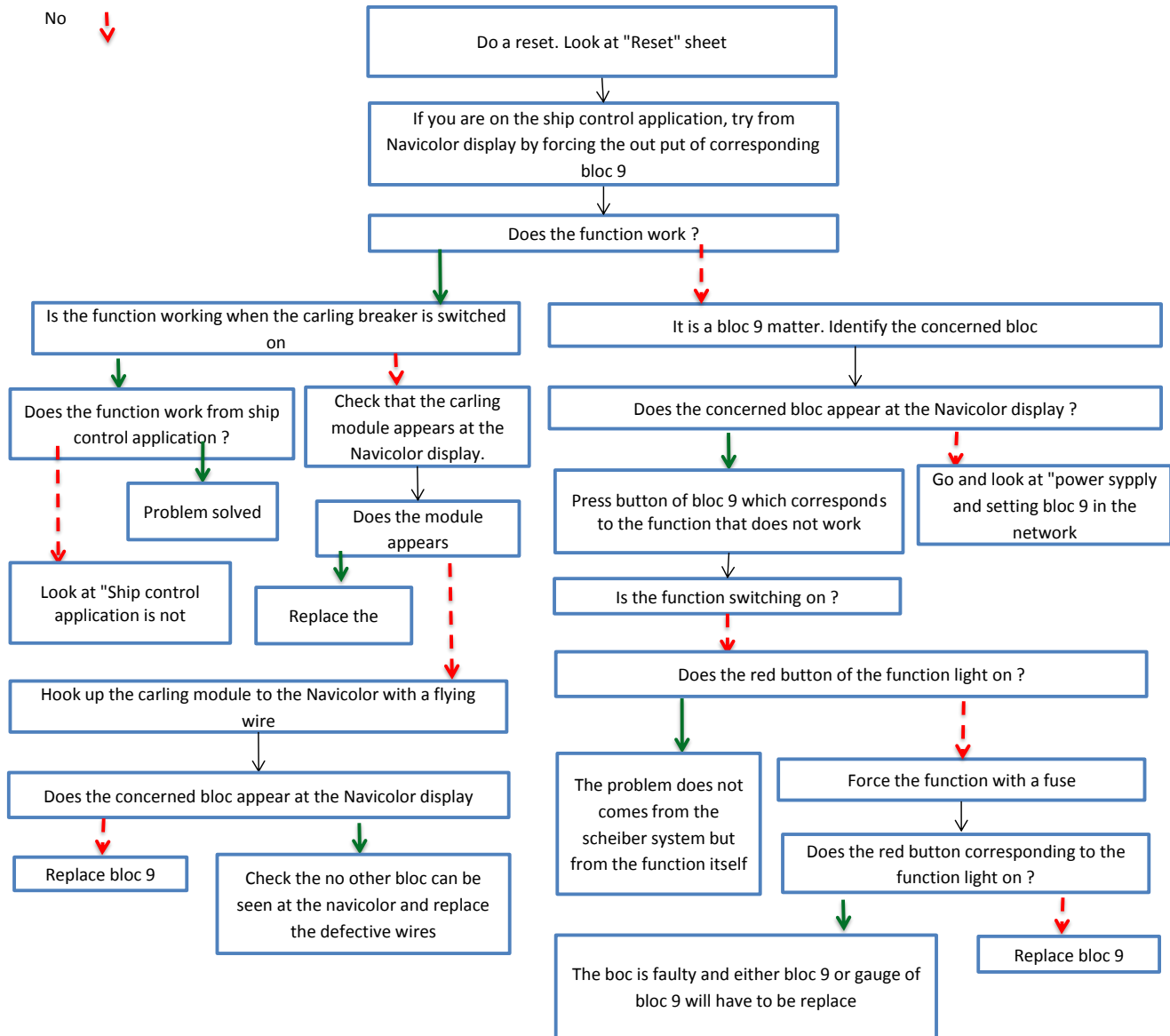
Control of AC input and GE input voltages.



Take the measure of voltage 220V ICI

The bildge pump are not switching on (force mode)

Yes 
No 



I can not monitor the stereo (monozone)

Yes



No



Do a reset. Look at "Reset" sheet



It is a matter of associated monozone amplifier to a monozone control panel. Identify the concerned blocs



Check that the monozone control panel A/C card and monozone amplifier have the same number



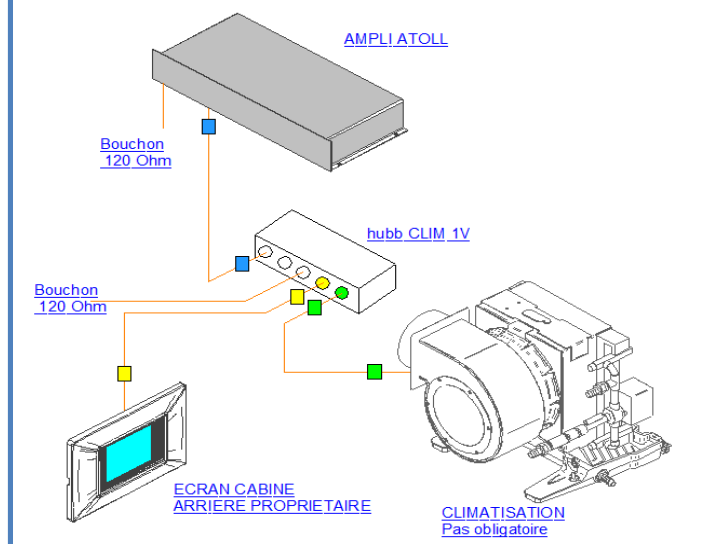
Are the numbers identicals ?



Enter the correct number



Proceed the installation below with flying wires



Does the stereo work from the cabin control panel ?



Replace the faulty wire



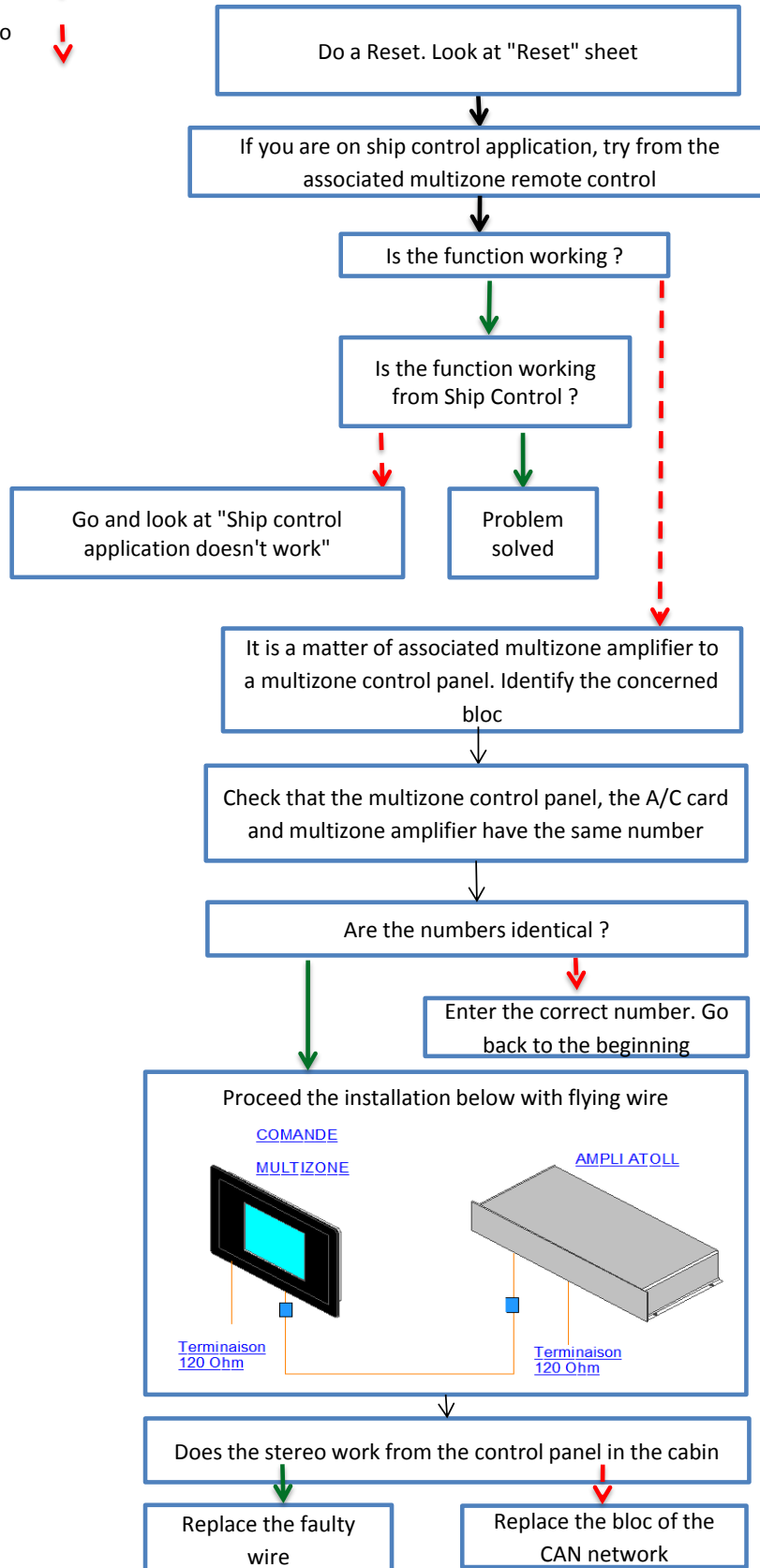
Replace the blocs of the CAN network

I can not monitor the stereo(multizone)

Yes

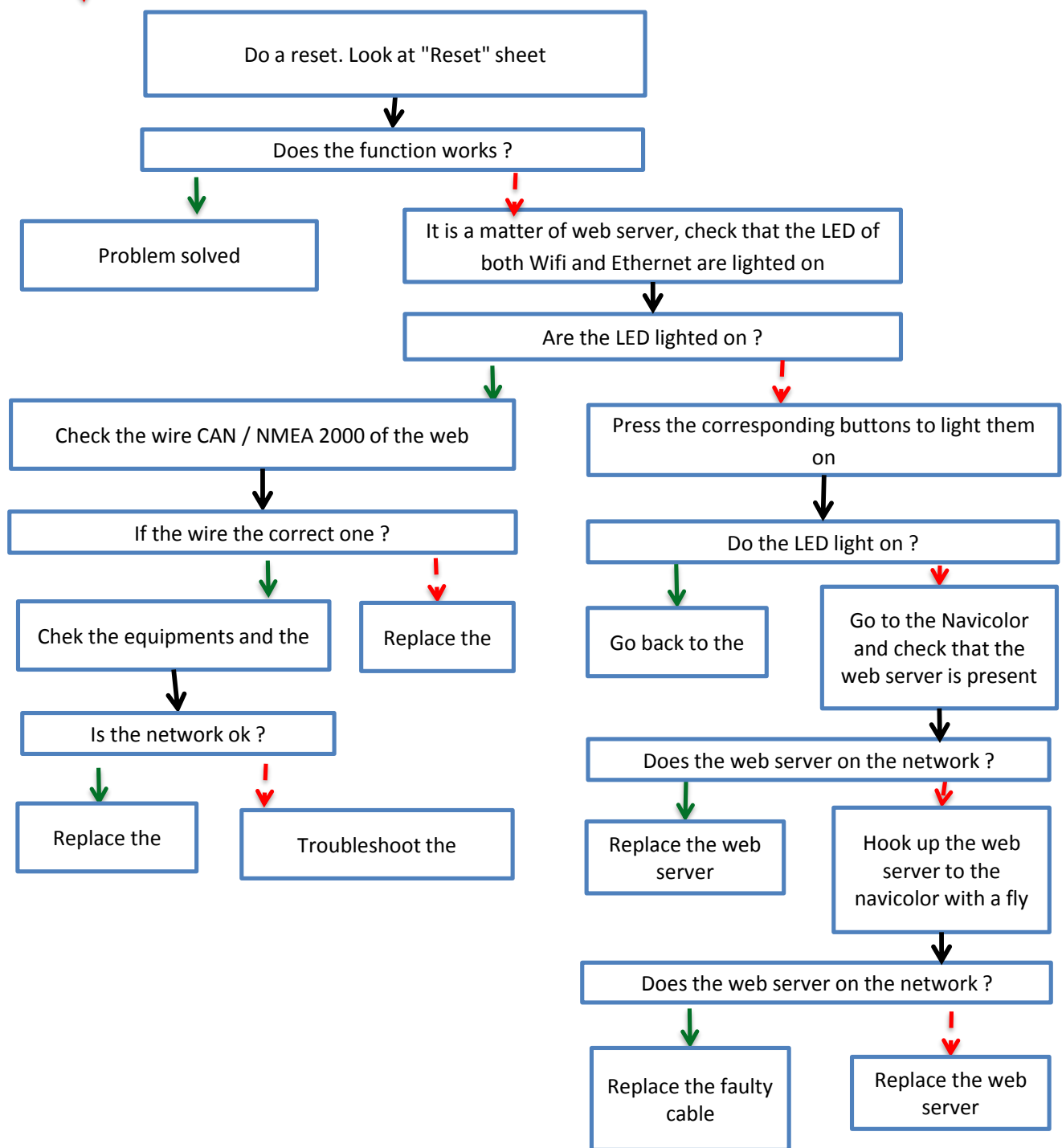


No



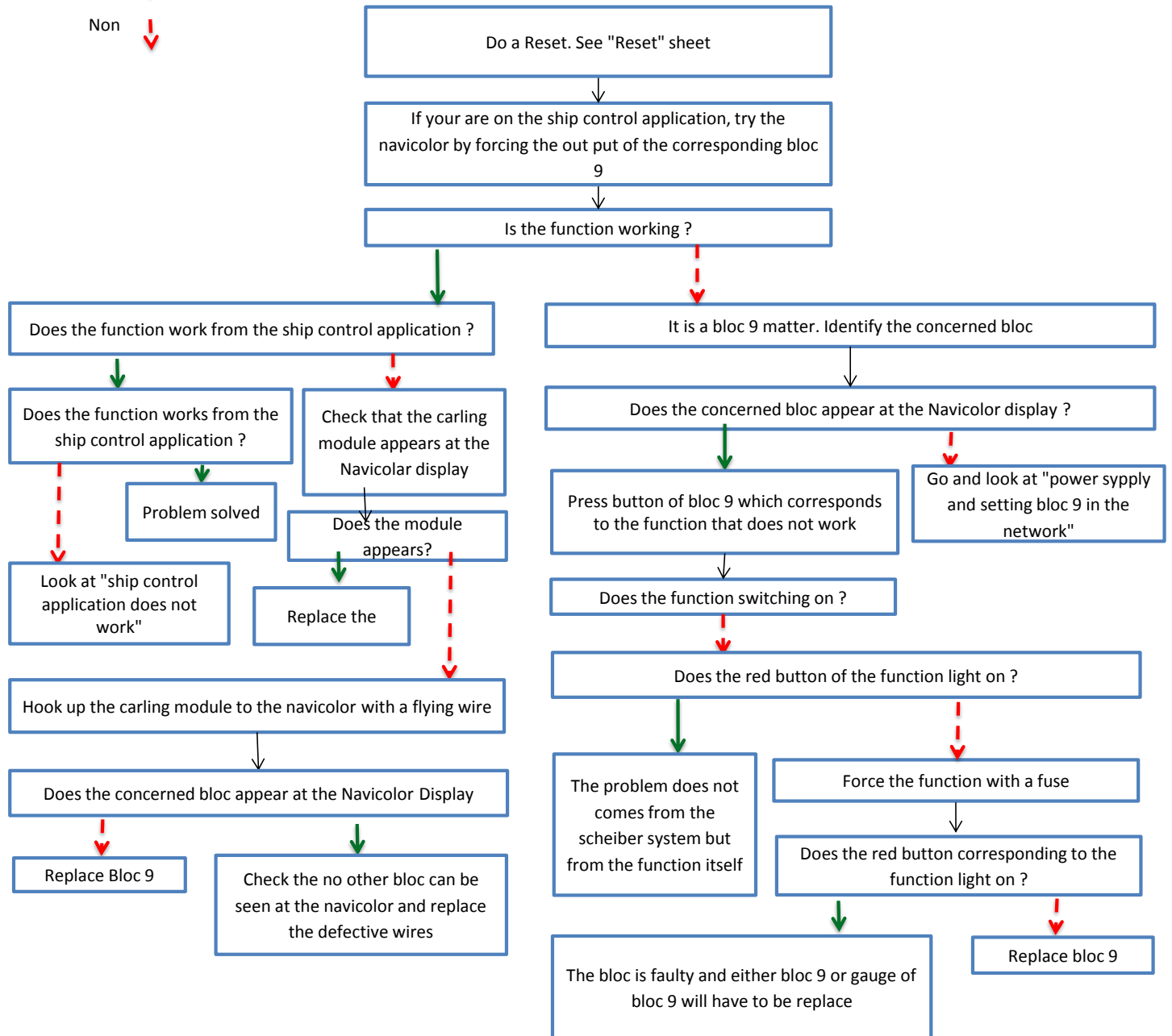
Yes
No

The engine data are not showing up at the Navicolor screen



















The switching is not working

Oui 
Non 



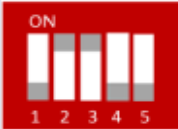

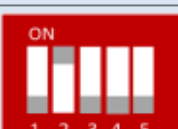
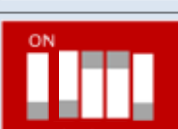



Codling of the microswitch

NETWORK CAN ADDRESS			
POSITION DU SWITCH	DISPLAY CODING N°	POSITION DU SWITCH	DISPLAY CODING N°
	0		8
	1		9
	2		10
	3		11
	4		12
	5		13
	6		14
	7		15

Except : Battery charger MDP

New version (automatic detection)

Battery charger in "MASTER" mode

Configuration	Dipswitc
Chargeur « MASTER » raccordé sur parc batterie N°1	
Chargeur « MASTER » raccordé sur parc batterie N°2	
Chargeur « MASTER » raccordé sur parc batterie N°3	
Chargeur « MASTER » raccordé sur parc batterie N°4	
Chargeur « MASTER » raccordé sur parc batterie N°5	
Chargeur « MASTER » raccordé sur parc batterie N°6	
Chargeur « MASTER » raccordé sur parc batterie N°7	

Recurrent problems

1- The A/C PCB cards are not showing up :

Think about powering up the fan coils (breakers and voltage on A/C at the source selector of the A/C)

2- The blocs appear and disappear constantly :

The problem is must of the time occured by a CAN cable which is not plug in correctly

The problem can be occured at 3, check the 120 ohms

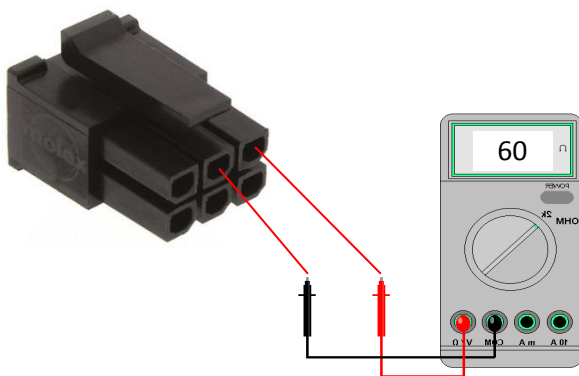
3- There are no blocs showing up at the Navicolor :

Check that the 120 ohms terminal are present and test the resistivity between the CAN -H and the CAN-L (60ohms)

Each of these two network must have of 60 ohms impedance. For that you need two 120 ohms terminals per network

Measure the impedance of every network in different arreas. For that, switch the batteries breakers and all the A/C breakers. Then measure the impedance as per the drawing below :

On a flying cable :



4- The battery charger doesn't appear all the time at the Navicolor :

Depending how the battery chargers are hooked up (directly at the batterie switch in put or on the Navicolor) it can happen that they don't appear all the time on the Navicolor

On the other hand, they inevitably appear when they are powered up in A/C voltage (shore power plug, source selector housing connected and breakers switched on)

5- A bloc is missing on Navicolor even so it is well connected to the network

Check the coding. If the two blocs have the same coding, they only on appear on the Navicolor